

ROUTE B

Lake Toya is in Shikotsu-Toya National Park. This region is one of Hokkaido's most interesting spot. In addition to lakes, it features a number of hot springs, plus Usuzan an active volcano. Hakodate became one of Japan's first international trading ports in 1859, and ever since has prospered as a major trading and fishery base, as well as the gateway to Hokkaido.

DAY 1 Rent a car → 52.2km (41mins) Shirai → Lunch at Shirai [Wagyu Beef Restaurant] → 30.3km (34mins) Noboribetsu → 1.4km (4mins) Noboribetsu → **GOOD NIGHT!** Stay in Noboribetsu

DAY 2 60.9km (55mins) Noboribetsu → Noboribetsu Date Jidaimura → 99.6km (88mins) Toyoko → Silo Observatory → 46.1km (45mins) Yakumo → Harvester Yakumo Restaurant → 46.1km (45mins) Nanae → Onuma Quasi-National Park → **GOOD NIGHT!** Stay in Onuma

DAY 3 9.7km (28mins) Hokuto → Kijihiki Highland Panoramic Observation Deck → 19.9km (36mins) Hokuto → Tani Sightseeing Farm → Hachiman-zaka Slope [Motomachi Area] → 19.9km (36mins) Hakodate → Old Public Hall of Hakodate Ward → **GOOD NIGHT!** Stay in Hakodate

More recommended places to visit in Hakodate!

- Hakodate Orthodox Church
- Kanemori Red Brick Warehouse
- Hakodate rental costume Kimono & Dress
- Hamburgers at "Lucky Pierrot," a popular local eatery

DAY 4 10.8km (23mins) Hakodate → Hakodate Morning Market → 2.7km (5mins) Hakodate → Ice118 → **GOOD NIGHT!** Stay in Chitose

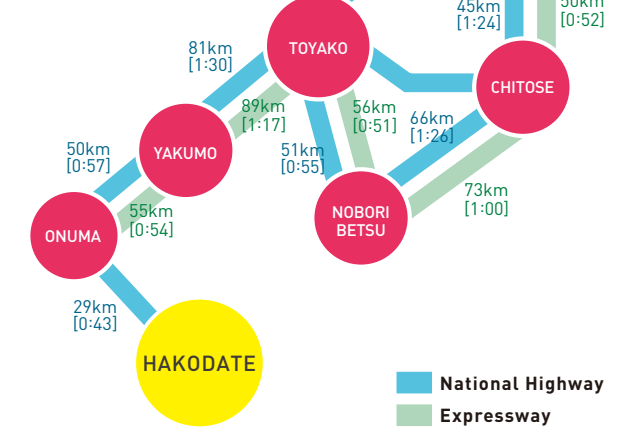
DAY 5 25.6km (33mins) Chitose → Lake Shikotsu → 3.7km (9mins) Chitose → Chitose Winery → 4.7km (8mins) Chitose → RERA Outlet Mall → **SEE YOU AGAIN!** New Chitose Airport → Flight back home

Getting to Hakodate

- JAL, ANA and AIRDO offer special fares for overseas visitors to Japan.
- JAL / Visit Japan Fare <http://www.jal.co.jp/yokosojapan/>
 - ANA / Experience JAPAN fare https://www.ana.co.jp/en/us/promotions/share/experience_jp/
 - AIRDO / Welcome to HOKKAIDO Fare <https://www.airdo.jp/en/plan/fare/list/welcome-hokkaido/>



Driving distances and times



Renting A Car

- Please visit the websites listed below.
- Nippon Rent-A-Car <https://www.nrgroup-global.com/en/>
 - JR Rent-A-Car <https://www.ekiren.co.jp/phpapp/en/>
 - ORIX Rent-A-Car <http://car.orix.co.jp/eng/>
 - TOYOTA Rent A Car <https://rent.toyota.co.jp/eng/>
 - Times Car Rental <http://www.timescar-rental.com/>

Driving in Hokkaido

Hokkaido Expressway Pass

With the Hokkaido Expressway Pass, enjoy unlimited usage of expressways in Hokkaido for one fixed price! Be sure to buy a Hokkaido Expressway Pass when you rent your vehicle.

http://www.driveplaza.com/trip/drawari/hokkaido_expass/en.html

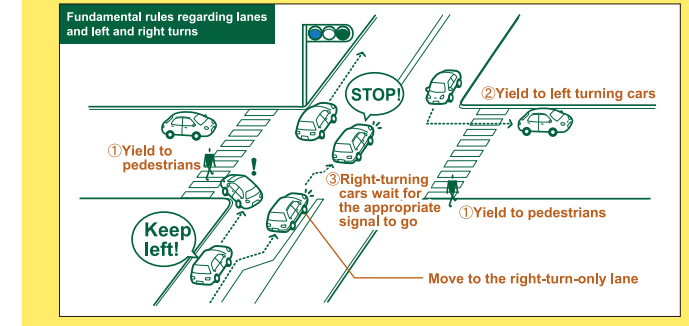
Price Chart

Number of days of use	2 days	3 days	4 days	5 days	6 days	7 days
Price(yen)	¥3,600	¥5,100	¥6,200	¥6,700	¥7,200	¥7,700
Price per day(yen)	¥1,800	¥1,700	¥1,550	¥1,340	¥1,200	¥1,100

Number of days of use	8 days	9 days	10 days	11 days	12 days	13 days	14 days
Price(yen)	¥8,200	¥8,700	¥9,300	¥9,800	¥10,300	¥10,800	¥11,300
Price per day(yen)	¥1,025	¥967	¥930	¥891	¥858	¥831	¥807

Safety Guidelines for Drivers

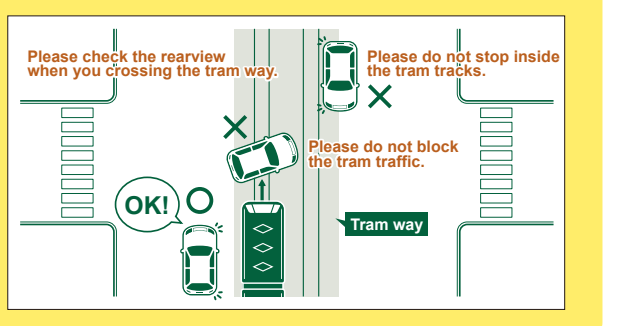
The following handbook is a must-have for driving in Hokkaido: <https://www.hkd.mlit.go.jp/ky/ki/renkei/ud49g7000003e9z.html>



Road signs

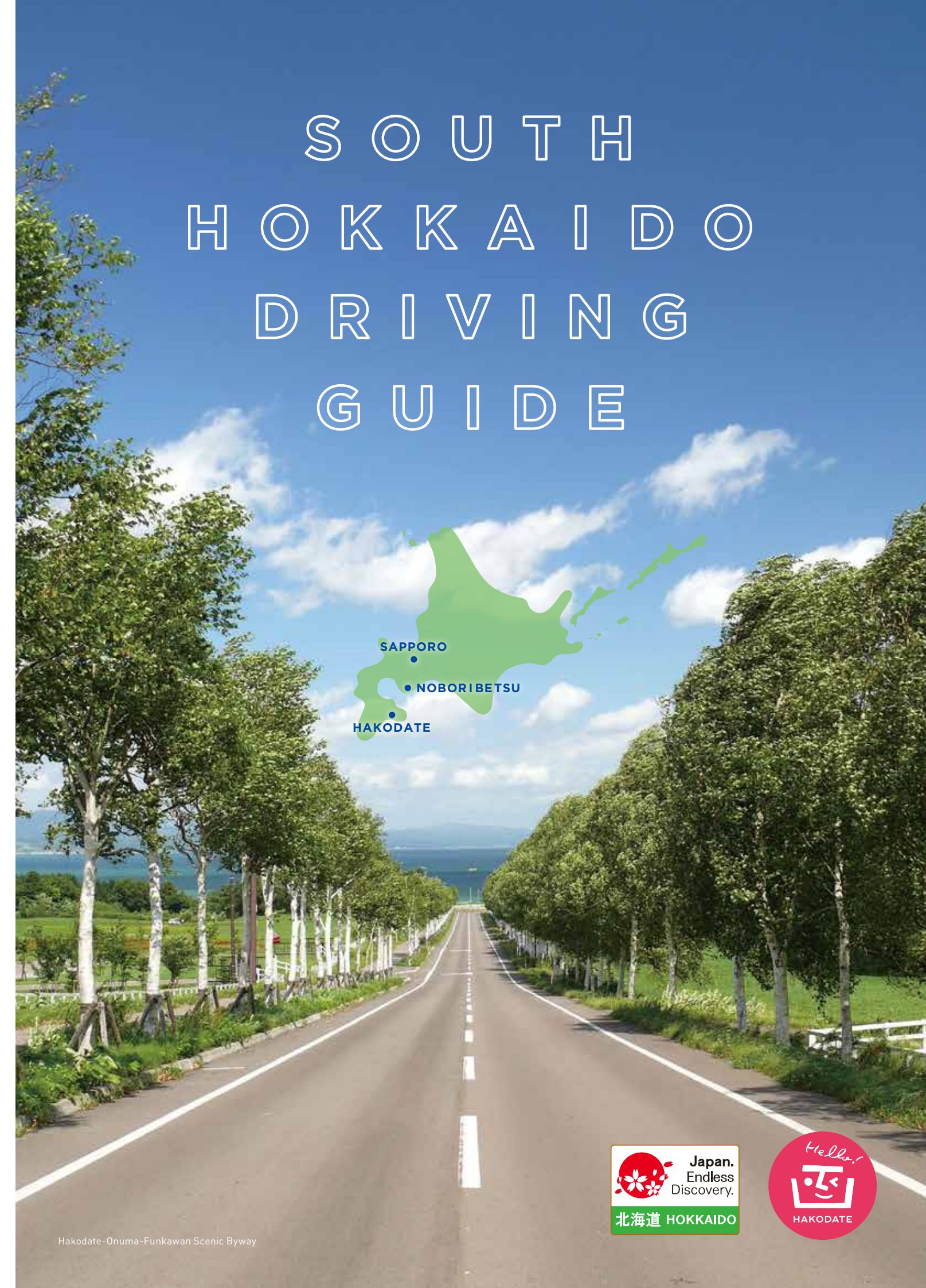


Tram running in Hakodate



Hokkaido Tourism Websites

- Hakodate Official Travel Guide <https://www.hakodate.travel/en/>
- Noboribetsu International Tourism and Convention Association <http://www.noboribetsu-spa.jp/?lang=en>
- Welcome to Sapporo <http://www.sapporo.travel/?lang=en>
- Good Day Hokkaido [Hokkaido Tourism Organization] <http://en.visit-hokkaido.jp/>



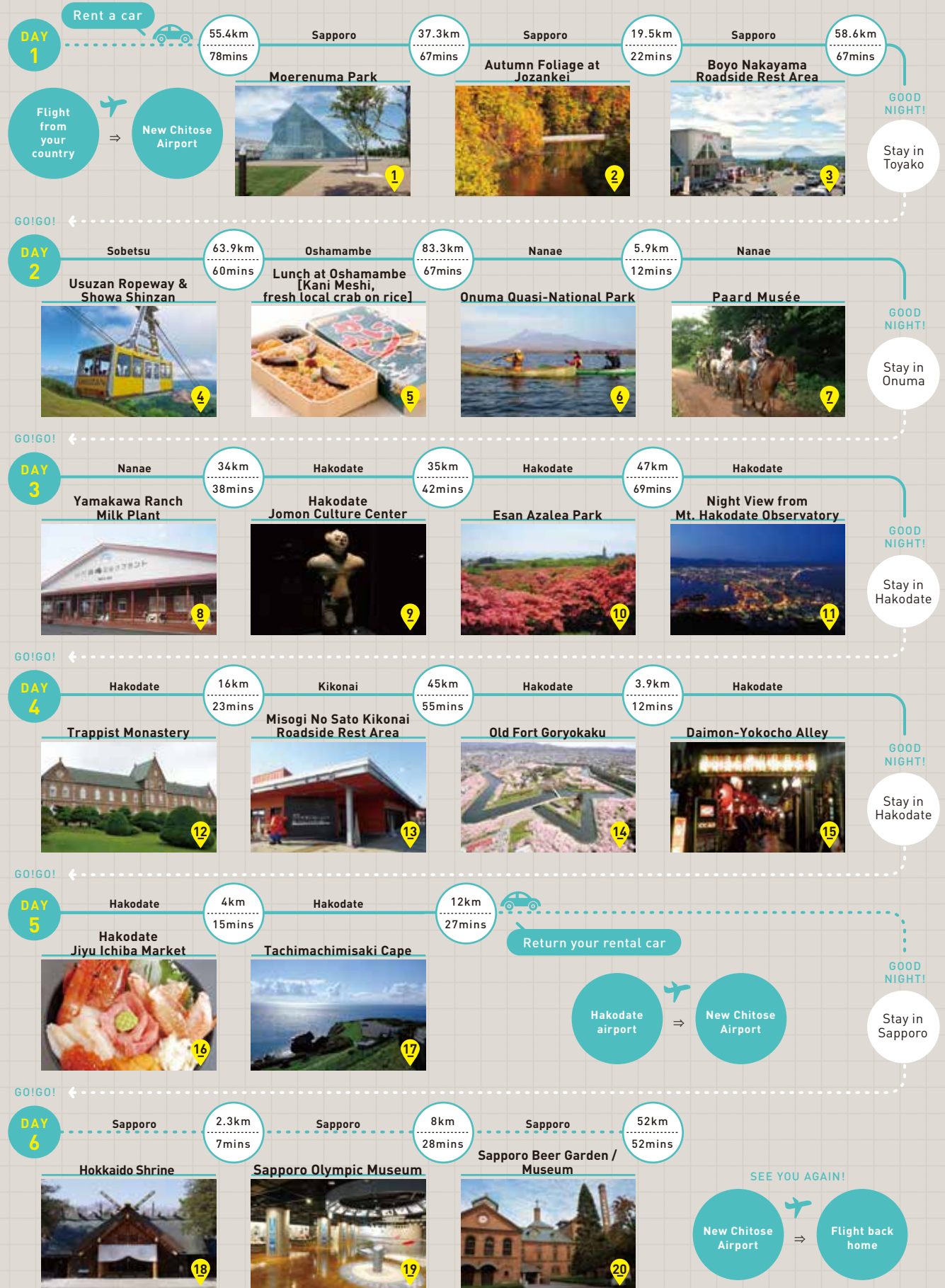
SOUTH HOKKAIDO DRIVING GUIDE

Hakodate-Onuma-Funkawan Scenic Byway



ROUTE A

Tour South Hokkaido in your own car! Come and see the wonderful panoramic landscapes of Onuma Quasi-National Park, as well as a prehistoric Jomon Culture heritage site. With its unbelievably delicious and fresh seafood, Hakodate Morning Market is a must for the visitor.



AREA MAP



[What is the Map Code?] 6- to 12-digit codes for car navigation allow you to pinpoint your destination anywhere in Japan. Rent-a-car companies provide mapcode lists. *Mapcode is a registered trademark of Denso Corporation.

- 1 Moerenuma Park**
Sculptor Isamu Noguchi created the basic design on the concept of "the whole being a single sculpture," combining elements of fountains, hills and various geometric objects. Enjoy a unique fusion landscape of nature and art. ☎ 9 742 570*74
- 2 Autumn Foliage at Jozankei**
Jozankei Onsen is a famous hot spring town in suburban Sapporo, surrounded by beautiful mountains and magnificent canyons. Jozankei has a rich 130-year history and stunning autumn scenery. ☎ 708 755 553*35 (Jozankei Tourist Association)
- 3 Boyo Nakayama Roadside Rest Area**
Located at the top of Nakayama Pass, Boyo Nakayama offers excellent views of Mt. Yotei and a tasty deep-fried potato specialty called "Ageimo." ☎ 86 011 874*32 (Sanroku Station of Mt. Hakodate Ropeway)
- 4 Usuzan Ropeway & Showa Shinzan**
The ropeway soars over the landscape of Toya Caldera and Usu Volcano Global Geopark. A perfect place to enjoy the bold beauty of earth shaped by various volcanic eruptions. ☎ 321 433 349*17
- 5 Lunch at Oshamambe [Kani Meshi, fresh local crab on rice]**
Kani Meshi, fresh local crab on rice. Why not try Kani Meshi, the special delicacy of Oshamambe? It's available every day at the town's best-known restaurant, Kanaya. ☎ 762 868 740*22
- 6 Onuma Quasi-National Park**
Located only 20 kilometers north of Hakodate, the park is known for its picturesque island-dotted lake and its majestic dormant volcano, Mt. Komagatake. ☎ 86 815 506*60
- 7 Paard Musée**
A beautiful horse ranch at Lake Onuma with a stunning view of Mt. Komagatake. Highly recommended for horseback riding lovers! ☎ 490 327 004*77
- 8 Yamakawa Ranch Milk Plant**
Thanks to the abundance of cows fed on high quality grasses, milk and dairy products have become Hokkaido's most famous and popular items. ☎ 86 786 324*64

ROUTE A — **ROUTE B** —

- Hokkaido Expressway
- IC(Hokkaido Expressway Entrance and Exit)
- National / Hokkaido Highway
- Japan Railway
- Hokkaido Shinkansen (Bullet Train)

Michi No Eki [Roadside Rest Areas]

There are many Michi No Eki (roadside rest areas) for your convenience and relaxation during your Hokkaido drive. They offer free parking, bathrooms, souvenir shops and dining/snack facilities featuring local produce. Great places to get refreshed! ☎ 9 487 191*25 <http://www.hokkaido-michinoeki.jp/en/>

- 9 Hakodate Jomon Culture Center**
When the Ice Age ended 15,000 years ago, people settled in fertile lands and formed villages. This was the beginning of the Jomon Period in Japan. The museum displays various artifacts, including Chuku Dogu, a clay figurine which is a national treasure. ☎ 744 053 054*52
- 10 Esan Azalea Park**
The Park features azalea gardens with a view of the Pacific Ocean. Mt. Esan is an active volcano rising 620 meters above sea level, and is a popular place to visit from Hakodate. ☎ 875 123 744*82
- 11 Night View from Mt. Hakodate Observatory**
The breathtaking panorama view of Hakodate City and surrounding sea will capture your heart. This attraction rates three stars in the Michelin Green Guide Japan. ☎ 86 011 874*32 (Sanroku Station of Mt. Hakodate Ropeway)
- 12 Trappist Monastery**
Japan's first, established in the 19th century. Photos of people living in the monastery and their daily life are displayed in its museum. Famous for cookies baked by monks. ☎ 951 248 501*27
- 13 Misogi No Sato Kikonai Roadside Rest Area**
Located in front of Kikonai's Shinkansen Station, this famous rest area offers unique local products from 9 towns in southern Hokkaido. Its Italian restaurant is run by an internationally recognized chef. ☎ 584 652 020*26
- 14 Old Fort Goryokaku**
Fort Goryokaku is a star-shaped, western style citadel built in the last years of the Edo Period for the defense of Hakodate. Years later, it became an important site of the civil war between the old shogunate and the new Meiji government. ☎ 86 166 277*14
- 15 Daimon-Yokocho Alley**
On both sides of this traditional food alley you'll find clusters of Japanese pubs and restaurants. It's a great place to grab quick and tasty meals and soak up the local ambiance. ☎ 86 073 331*01
- 16 Hakodate Jiyu Ichiba Market**
With its rows of high quality fresh seafood shops, the market is always busy with local shoppers and tourists. ☎ 86 073 467*66



17 Tachimachisaki Cape

Tachimachisaki Cape is located at the east end of Mt. Hakodate. On a clear sunny day, you can see Shimokita Peninsula in Aomori prefecture! ☎ 951 296 089*22

18 Hokkaido Shrine

Standing amid pristine pines and cedars, the shrine dates from 1869. It attracts many visitors in spring for cherry and plum blossom viewing and receives over 800,000 worshippers for new year wishes during the first 3 days of every January. ☎ 9 487 191*25

19 Sapporo Olympic Museum

Find out all about the 1972 Sapporo Winter Olympic Games and the history of the city itself. ☎ 9 455 820*26

20 Sapporo Beer Garden / Museum

Established in 1987, the museum provides visitors a fun and unique overview of beers and brewing, and details the history of Sapporo Breweries Ltd. ☎ 9 554 291*55

21 Lunch at Shiraori [Wagyu Beef Restaurant]

Shiraori Wagyu is one of the best wagyu brands Hokkaido offers. It is known for superb taste and tenderness. ☎ 545 193 173*24 (Shiraori Tourist Association)

22 Oyunuma

Located in a volcanic crater at the base of Mt. Hijori, Oyunuma Lake is approximately one kilometer around. At the bottom of the lake, hot water bubbles out from sulfurous vents at a temperature of 130°C. ☎ 603 288 875*28

23 Jigoku-dani [Hell Valley]

The main source of Noboribetsu's hot spring waters, Hell Valley displays various hot steam vents, sulfurous streams, mud pots and other volcanic phenomena. ☎ 603 288 330*25

24 Noboribetsu Date Jidaimura

A historic theme park recreating the Edo Period. Turn the clock back to the time of the shoguns - enjoy traditional games, activities, theater, street performances and much more. ☎ 603 169 318*75

25 Silo Observatory

Enjoy a large panoramic view overlooking sparkling blue Lake Toya and its islands. Mt. Usu and Showa Shinzan can be seen next to each other beyond the lake! ☎ 321 726 730*43

26 Harvester Yakumo Restaurant

This farm restaurant is located next to the Yakumo Parking area on the Hokkaido Expressway. Enjoy locally grown fresh food with a stunning view of the Uchiura Bay. The restaurant is also famous for its Neapolitan-style pizza. ☎ 687 518 013*53

27 Kijihiki Highland Panoramic Observation Deck

Enjoy a fantastic 360 degree vast panoramic view from the observation deck. On a clear day, Mt. Hakodate, Mt. Komagatake and Shimokita Peninsula in Aomori Prefecture can be seen. ☎ 490 074 880*27

28 Tani Sightseeing Farm

Enjoy picking strawberries, cherries, apples and much more! South Hokkaido is full of fruits farms for you to visit and savor their harvests. ☎ 774 509 121*22

29 Hachiman-zaka Slope [Motomachi Area]

At the foot of Mt. Hakodate, there are 19 steep streets leading straight to Hakodate Port. Scattered with historic buildings and exotic landscapes, these streets and hills are popular places for a fascinating and relaxing stroll. ☎ 86 040 325*27

30 Old Public Hall of Hakodate Ward

An unique western-style building featuring a magnificent hall and rooms. Originally it was designed as an important cultural property. ☎ 86 040 434*41

31 Hakodate Morning Market

The market is located near JR Hakodate Station and is known as a paradise for fresh seafood lovers. Catch live squid from a fish tank, savor freshly cooked crab and enjoy shopping for local specialties. ☎ 86 072 374*56

32 Ice 118

Located in front of the Hakodate Milk Farm, here you can enjoy soft-serve ice cream and various dairy products made from the freshest and richest local milk. ☎ 86 086 368*78

33 Lake Shikotsu

Located west of Chitose City, this crater lake was formed more than 40,000 years ago through volcanic eruptions. Its maximum depth is 363 meters, making it the second deepest lake in Japan. ☎ 867 063 388*42

34 Chitose Winery

If you are visiting Chitose, this is a must-see. The wines are delicious, and it's easy to get to - it's a 7-minute walk from JR Chitose Station [which itself is only 2 stations from New Chitose Airport]. ☎ 113 888 548*76

35 RERA Outlet Mall

With over 400 brand shops and only 10 minutes from New Chitose Airport by free shuttle bus, RERA is an ideal combination of luxury, choice and convenience. ☎ 113 831 044*88

36 Sapporo Beer Garden / Museum

Established in 1987, the museum provides visitors a fun and unique overview of beers and brewing, and details the history of Sapporo Breweries Ltd. ☎ 9 554 291*55

37 Misogi No Sato Kikonai Roadside Rest Area

Located in front of Kikonai's Shinkansen Station, this famous rest area offers unique local products from 9 towns in southern Hokkaido. Its Italian restaurant is run by an internationally recognized chef. ☎ 584 652 020*26

38 Tachimachisaki Cape

Tachimachisaki Cape is located at the east end of Mt. Hakodate. On a clear sunny day, you can see Shimokita Peninsula in Aomori prefecture! ☎ 951 296 089*22

39 Esan Azalea Park

The Park features azalea gardens with a view of the Pacific Ocean. Mt. Esan is an active volcano rising 620 meters above sea level, and is a popular place to visit from Hakodate. ☎ 875 123 744*82

40 Night View from Mt. Hakodate Observatory

The breathtaking panorama view of Hakodate City and surrounding sea will capture your heart. This attraction rates three stars in the Michelin Green Guide Japan. ☎ 86 011 874*32 (Sanroku Station of Mt. Hakodate Ropeway)

41 Usuzan Ropeway & Showa Shinzan

The ropeway soars over the landscape of Toya Caldera and Usu Volcano Global Geopark. A perfect place to enjoy the bold beauty of earth shaped by various volcanic eruptions. ☎ 321 433 349*17

42 Autumn Foliage at Jozankei

Jozankei Onsen is a famous hot spring town in suburban Sapporo, surrounded by beautiful mountains and magnificent canyons. Jozankei has a rich 130-year history and stunning autumn scenery. ☎ 708 755 553*35 (Jozankei Tourist Association)

43 Moerenuma Park

Sculptor Isamu Noguchi created the basic design on the concept of "the whole being a single sculpture," combining elements of fountains, hills and various geometric objects. Enjoy a unique fusion landscape of nature and art. ☎ 9 742 570*74

44 Boyo Nakayama Roadside Rest Area

Located at the top of Nakayama Pass, Boyo Nakayama offers excellent views of Mt. Yotei and a tasty deep-fried potato specialty called "Ageimo." ☎ 86 011 874*32 (Sanroku Station of Mt. Hakodate Ropeway)

45 Hakodate Jomon Culture Center

When the Ice Age ended 15,000 years ago, people settled in fertile lands and formed villages. This was the beginning of the Jomon Period in Japan. The museum displays various artifacts, including Chuku Dogu, a clay figurine which is a national treasure. ☎ 744 053 054*52